

RESEARCH AND POLICY IN CARE ALLIANCE IRELAND - THE INS AND OUTS, AND UPS AND DOWNS

Zoe Hughes
Senior Policy & Research Officer

Care Alliance Ireland AGM 19th September 2023



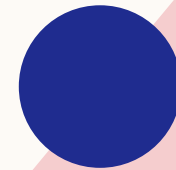
PRESENTATION OUTLINE

Policy & Research within the CAI

Strategic Plan

How we track change and impact of our
work

Membership Involvement





ABOUT ME

- Began working in Care Alliance in 2015
- Degree in Philosophy (how useful!)
- H.Dip in Social Policy
- Masters in Social Work
- Masters in Disability Studies
- Worked in voluntary (disability and mental health) or education sectors since I was 18
- Currently studying for the Doctorate in Social Science in UCC



OUR STRATEGIC PLAN - POLICY

Bring Cohesion To The Family Carer Sector

- Prepare detailed policy submissions
- Networking opportunities for ourselves and member organisations
- Representative work on national & international fora
- Support carer-specific research that informs and progresses policy

Provide Up-to-date Relevant Information

- Creation and dissemination of research & policy documents
- Use of newsletter & other media fora to share policy documents and research (our own and others) across the sector nationally & internationally



OUR STRATEGIC PLAN - RESEARCH

Bring Cohesion To The Family Carer Sector

- Conferences
- Linking projects and researchers across the sector
- Work to incorporate research into policy to enable a cohesive approach to key policy and service issues

Provide Up-to-date Relevant Information

- Creation and dissemination of research & policy documents
- Use of newsletter & other media fora to share research (our own and others) across the sector nationally & internationally

Drive The Research Agenda On Family Caring

- Collaborative (funded) research projects
- Briefing documents
- Discussion Paper Series
- Supporting students & early career researchers
- Family Carer Research Group
- PPI Ignite Network



Research

Policy



WHAT I DO

Create easy to read summaries of key policy instruments and developments for members and family carers

Write Discussion Paper Series (secondary research & literature review)

Represent CAI and family carers issues in general at events and on relevant working groups



Make policy submissions to relevant government departments etc.

Talk with member organisations and other groups to understand key issues for the family carers they support/work with

2023

- [Care Alliance Ireland Additional Submission to Draft Digital Health and Social Care Framework 2023-2030](#) (May 2023)
- [Care Alliance Ireland Additional Submission to the Public Consultation on the draft Patient Voice Partner Policy](#) (April 2023)
- [Care Alliance Ireland Submission to the Department of Social Protection consultation on the Departmental Statement of Strategy 2023-2026](#) (February 2023)
- [Care Alliance Ireland Submission to Census 2027 Public Consultation](#) (January 2023)

2022

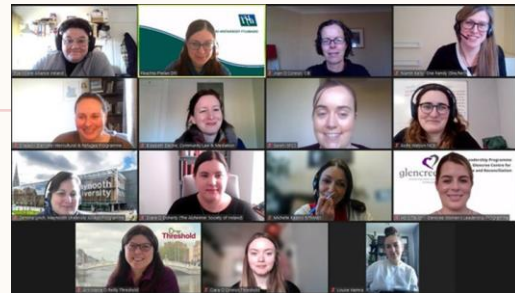
- [Care Alliance Ireland Submission to the Changing Places Consultation](#) (May 2022)
- [Care Alliance Ireland Submission to the EU Strategy on Caring](#) (March 2022)
- [Care Alliance Ireland Submission to the Joint Oireachtas Committee on Gender Equality](#) (March 2022)
- [Care Alliance Ireland Submission to the Public Consultation on the Next Government Policy on Children and Young People](#) (February 2022)

WHAT I DO

Collaborate with Universities and other research organisations to support family carer research and PPI methodologies

Coordinate the sharing of research requests via our public & social media channels

Facilitate the Family Carer Research Group & Others



Publish academic journal articles in collaboration with colleagues

Collaborate with national & international family carer organisations on relevant policy & research work

Edit and collate the CAI Policy & Research Digest (Wakelet)



RESEARCH & POLICY DIGEST

Research



50 items
Irish Family Carer Research



91 items
Intl. Family Carer research



3 items
Research Resources



23 items
Carers and Covid-19 (Research)

Practice & Campaigns



45 items
Home Care in Ireland



8 items
Practice with Family Carers



106 items
Family Carers in the news



17 items
Disability & Family Care

Policy



18 items
Family Carers- Irish Policy

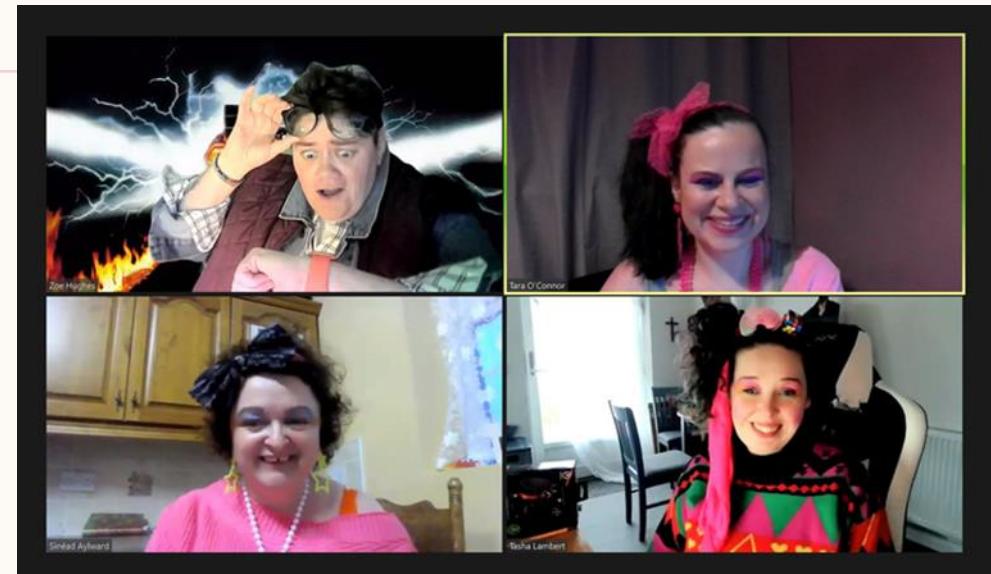
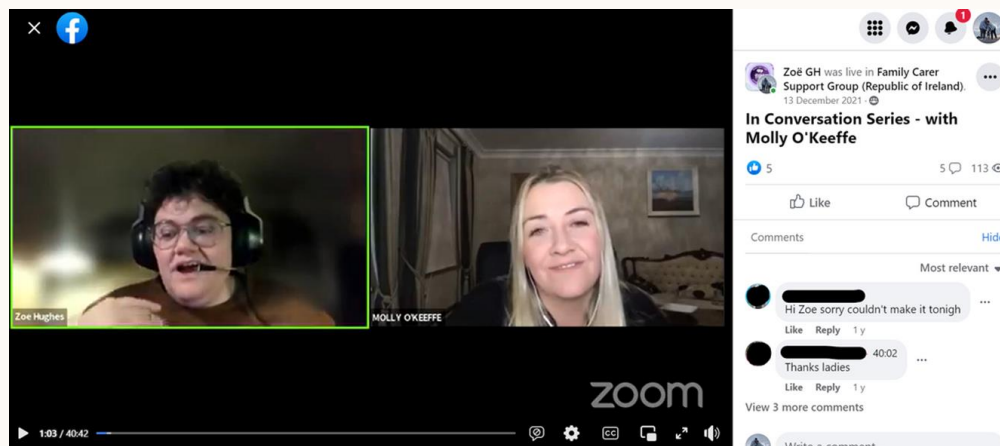


4 items
Family Carers - International Policy

WAKELET.COM/@CAREALLIANCEIRELAND



WHAT I DO – EXTRAS!



COLLABORATION

Collaboration is at the heart of the work of Care Alliance Ireland

Research Collaboration

- PPI Ignite @UL
- CareVisions @UCC
- Learning4Carers (Erasmus+)
- EnCaRe @UCD
- EPYC (EU)
- Academic papers



Policy Collaboration

- Social Policy Network
- HSE National Patient Forum
- Home Care Coalition
- Joint submissions
- Collaboration on Budget asks and general policy positions
- Collaboration with policy makers on specific plans; eg. HSE Digital health and Social Care Implementation Plan

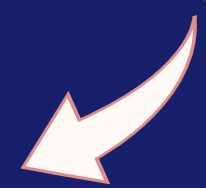
RESEARCH REVIEWS: COLLABORATION REQUESTS

- 1) Check topic relevancy
- 2) Check subject relevancy
- 3) Check collaborator relevancy

- 4) Duration
- 5) Responsibilities
- 6) PPI Involvement

- 7) Adequate funding for our involvement
- 8) Open Access dissemination plan

Research Sub-Committee Review



RESEARCH REVIEWS: DISSEMINATION/ RECRUITMENT

- 1) Check topic relevancy
- 2) Check subject relevancy
- 3) Check collaborator (Not-for-profit)



- 4) Request confirmation of ethical approval
- 5) Disseminate via National Carers week Facebook page

CREATING CHANGE & IMPACT

- Difficult to quantify
- Many different organisations and individuals are working to create change and develop strong policies and supports for family carers - many of whom are our members
- For some of the issues we work on we cannot take credit for the initial idea or concept - that is important to note
- Change can take years in the Irish policy landscape



WAYS WE TRACK CHANGE & IMPACT

- Review policy documents when published for inclusion of family carers' issues generally and specific issues raised by us (and others) in submissions, research, lobbying, etc.
- Publication of Post-Budget Analysis of the Budget each year with specific reference to measures for family carers and those they care for
- Monitoring current and upcoming research projects nationally and internationally for increased or decreased family carer related topics and/or funding streams
- Noting the level of PPI elements to successful research projects relating to family caring
- Evaluation of our internal service delivery projects (most notably our employment projects) to check for improvements/ changes in the lives of participants

EXAMPLES OF IMPACT

- 21 days to return requested material for Carers Allowance reviews (2023)
- Family carers being mentioned more as a specific group in policies (noticeable as a pattern over time, but not always with meaningful actions included)
- Upcoming referendums on care in the home and gender equality (2023)
- Change in income disregards for CA (Budget 2022)
- 2017 - commitment from HSE to minimise use of the phrase 'informal carer' following a Briefing Document
- Cost of Disability research (DSP) conducted (2022); did not include cost of caring in final terms of reference but successfully included in the final report
- 2018 Code of Conduct for Pharmacists include specific commitment to reflect the role of family carers (per CAI submission)



GETTING INVOLVED

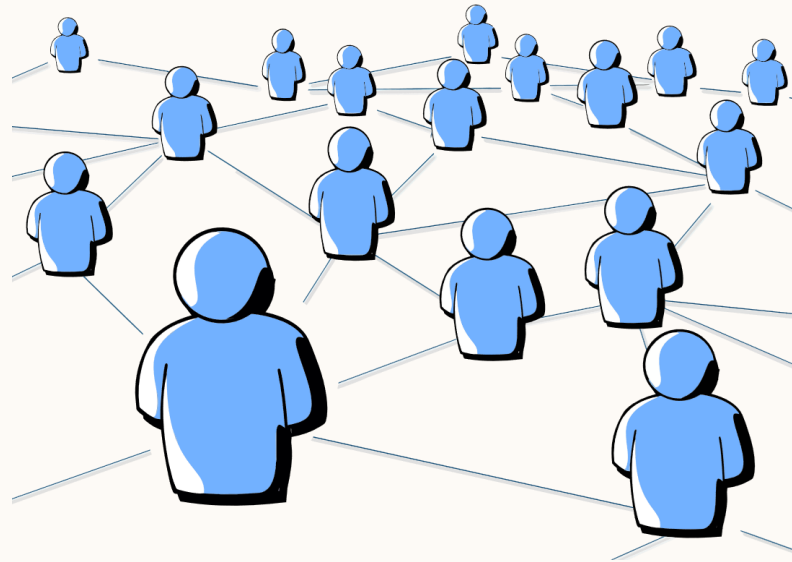
Joint Policy Work

- Joint submissions
- Policy statements/ briefing notes
- Sharing of resources
- Coordination of policy asks & policy positions where possible
- Inclusion of member organisations' key asks into submissions (referenced)

Collaborative Research

- Discussion Papers
- Briefing notes
- Joint research applications & projects

GETTING INVOLVED



Networking Opportunities

- Targeted networking opportunities (e.g. attendance at Annual Carers Forum, topical briefings, etc.)
- Family Carer Research Group
- Social Policy Network
- National Patient Forum
- Conferences

TELL US WHAT YOU WANT



- We are here to support our member organisations
- If you are interested in research and/or policy from a member organisation, please let me know! Staff changes can be difficult to keep up with
- Member emails usually go to a CEO or other member of staff nominated by each member organisation
- If you would like to work together please reach out



THANK YOU

Zoe Hughes

zoe@carealliance.ie

086-8834942